



# Release Notes

Fusion WMS

By Documentation Team

Version 8.17.0



© 2024 Kensium Solutions LLC

# Table of Contents

RELEASE NOTES..... 0

**RELEASE NOTES INFORMATION .....2**

**ACKNOWLEDGEMENTS.....2**

**NOTICE .....2**

**VERSION HISTORY .....2**

**NEW FEATURES AND ENHANCEMENTS.....3**

BATCH CREATE CONTAINERS & PRINT ..... 3

NEW FIELD PRIMARY LOCATION ADDED IN PUTAWAY AND HANDHELD ..... 8

NEW FIELD CREATION DATE ON THE CONTAINER SCREEN ..... 13

**INSTALLATION CHANGES..... 13**

**UI CHANGES.....14**

ZONE PICKING CHECKBOX ON THE WAREHOUSE SCREEN REMOVED.....14

FUSION CUSTOMER PREFERENCES MOVED .....14

**KNOWN BUGS AND ISSUES FIXES..... 15**

# Release Notes Information

Software Name	Fusion WMS
Version Number	8.17.0
Release Type (Initial/Minor/Intermediate/Major)	Intermediate
Compatible Acumatica Editions	Retail-Commerce <ul style="list-style-type: none"> <li>• 2021 R1</li> </ul>
Package Location	In SharePoint: Kensium Internal Products > Documents > Package Repository >

## Acknowledgements

Acumatica 2021 R1, R2, and Acumatica Commerce Edition are registered trademarks of Acumatica Inc. All Rights Reserved

Braintree is a service of PayPal. All Rights Reserved.

## Notice

The information contained in this document is subject to change without notice.

Kensium Solutions LLC shall not be liable for any errors or incidental or illegal acts in connection with the use of these release notes.

Reproduction, adaptation, or translation of this document is prohibited without prior written permission of Kensium Solutions, except as allowed under copyright laws. All Rights Reserved.

## Version History

Version Number	Description	Compiled By	Reviewed & Revised By	Approved By	Date
8.17.0	Documentation Team		Asha A		

# New Features and Enhancements

## Batch Create Containers & Print

We have introduced a Batch Create Containers & Print option in this version. By using this feature, we can create the master pack and inner pack and a bulk number of containers.

Note that, you have published the latest package of the Basic, Advanced and Optimization and installed the latest APK on the handheld. Once you publish the package successfully on the left panel you will see the option for Fusion WMS.

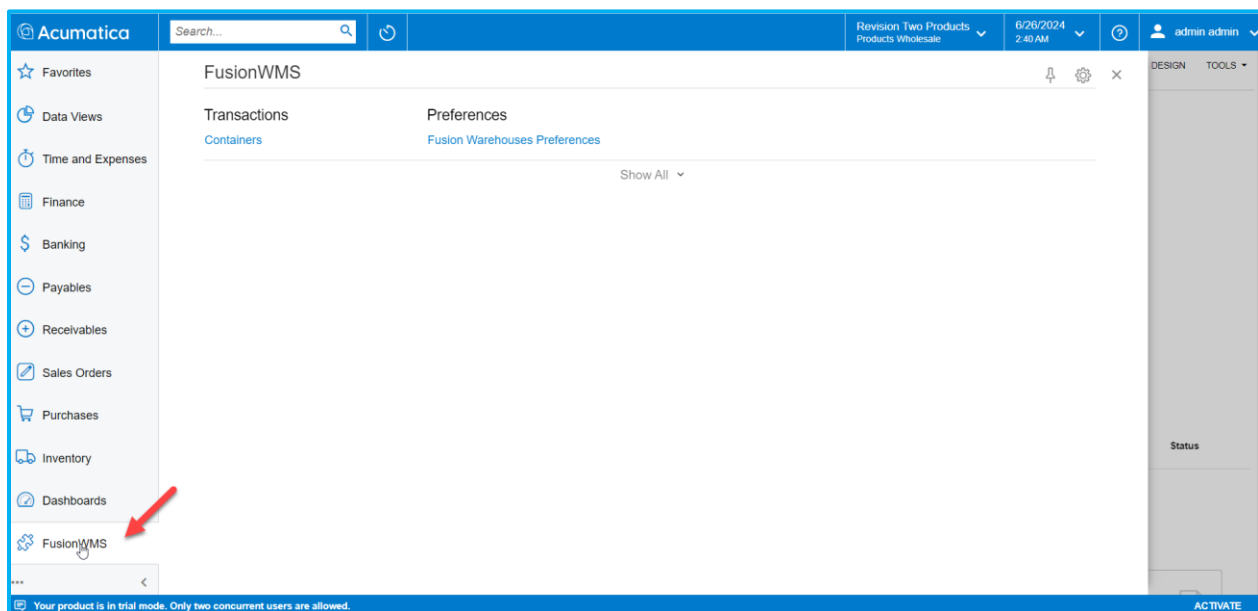


Figure: Sales Order Screen with Hand holder

Upon clicking on the Fusion WMS, you will be able to view the option of [Containers] under Transactions.

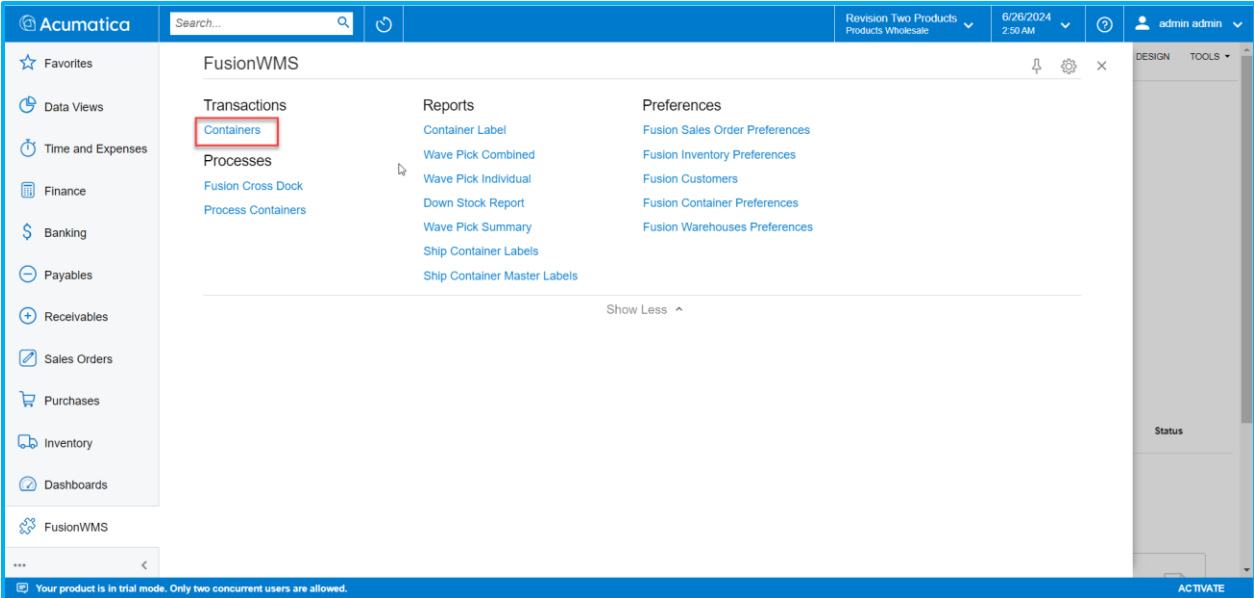


Figure: Containers option under Transactions

Upon clicking on the [Containers] the [Containers] screen will appear. Select the [Container ID ], and you will be redirected to the Container record screen with the ellipsis [...] button. Upon selecting the ellipsis button the [Action] screen will appear. You need to click on the [Batch Create Containers & Print] as shown below.

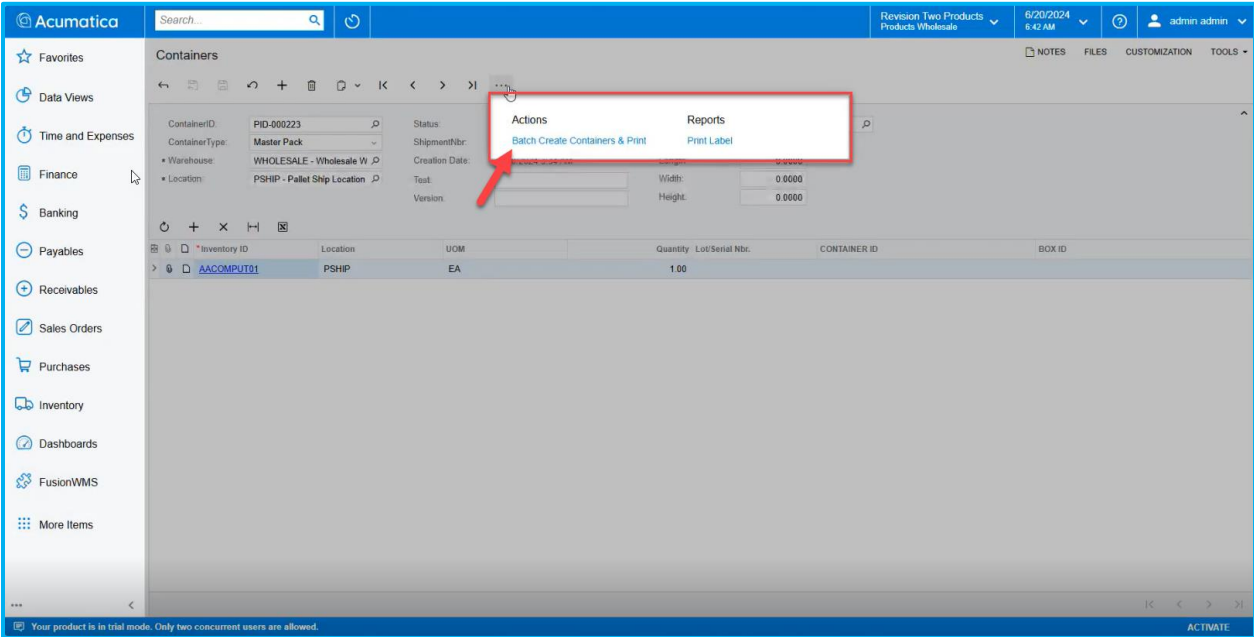


Figure: Batch Create Containers & Print

Upon clicking on the [Batch Create Containers & Print] a pop-up will appear on the screen as shown below.

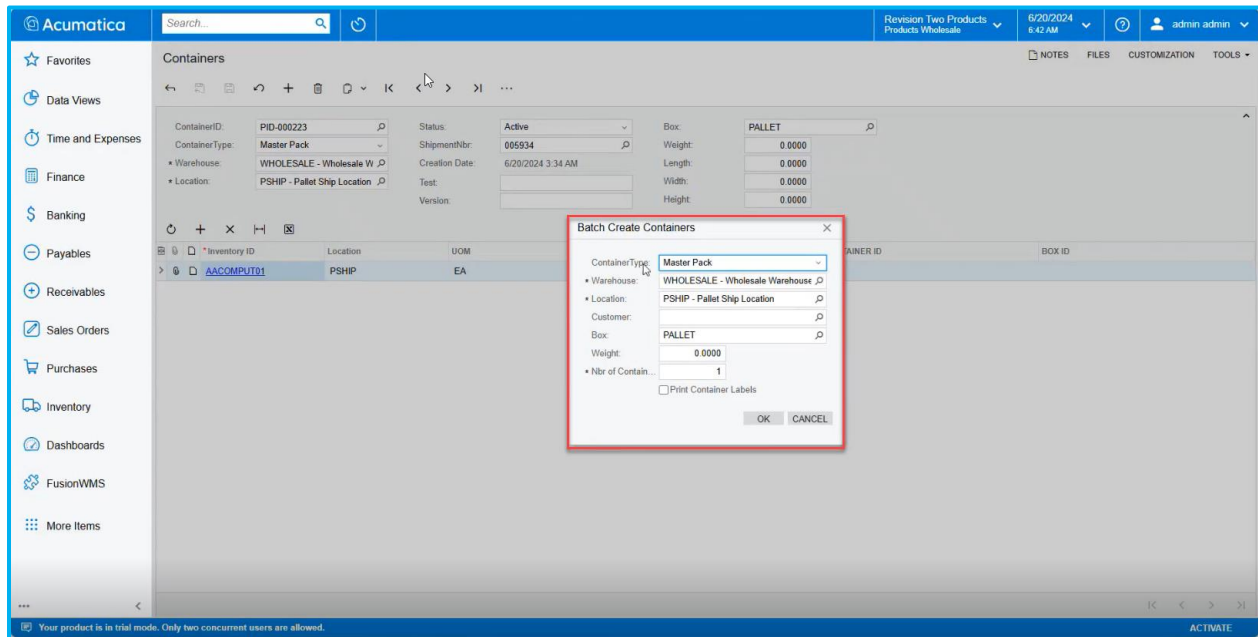


Figure: Batch Create Containers Pop-Up.

The pop-up includes the following:

- Container Type [Drop-down]: This includes the Master Pack and Inner Pack.
- Warehouse [Search Lookup]: You can select the warehouses which are active in the Warehouse screen.
- Location: [Search Lookup]: Select the Location ID.
- Customer [Search Lookup]: Select the Customer.
- Box [Search lookup]: Select the boxes from the boxes screen.
- Weight [Text Field]: Enter the weight of the Master pack or the Inner Pack based on selection.
- Nbr. Of Container [Text Field]: Enter the number of containers based on your last container ID and requirement.
- Print Container label [Check box]: Check the box to enable the option to Print Container Label.

Navigate to the [Container] screen and you will view the newly created container's ID. If the number of container id is set to 2 then 2 separate Container ID will be created.

Container ID	Created By	Created On	ContainerType	Last Modified By	Last Modified On	Location	Shipment Nbr	Warehouse	Status	Box
PID-000225	admin	6/20/2024	Master Pack	admin	6/20/2024	R1S1		WHOLESALE	Active	PALLET
PID-000224	admin	6/20/2024	Master Pack	admin	6/20/2024	R1S1		WHOLESALE	Active	PALLET
PID-000223	admin	6/20/2024	Master Pack	admin	6/20/2024	PSHIP	005934	WHOLESALE	Active	PALLET
PID-000222	admin	6/20/2024	Inner Pack	admin	6/20/2024	SHIPPED	005934	WHOLESALE	Active	
PID-000221	admin	6/20/2024	Master Pack	admin	6/20/2024	PSHIP	005933	WHOLESALE	Active	PALLET
PID-000220	admin	6/20/2024	Master Pack	admin	6/20/2024	PSHIP	005929	WHOLESALE	Active	PALLET
PID-000219	admin	6/20/2024	Inner Pack	admin	6/20/2024	SHIPPED	005929	WHOLESALE	Active	
PID-000218	admin	6/20/2024	Master Pack	admin	6/20/2024	SHIPPED	005923	WHOLESALE	Active	PALLET
PID-000217	admin	6/20/2024	Inner Pack	admin	6/20/2024	SHIPPED	005923	WHOLESALE	Active	
PID-000216	admin	6/19/2024	Master Pack	admin	6/19/2024	R1S1		WHOLESALE	Active	PALLET
PID-000215	admin	6/19/2024	Master Pack	admin	6/19/2024	R1S1		WHOLESALE	Active	PALLET
PID-000214	admin	6/19/2024	Master Pack	admin	6/19/2024	R1S1		WHOLESALE	Active	PALLET
PID-000213	admin	6/19/2024	Master Pack	admin	6/19/2024	R1S1		WHOLESALE	Active	PALLET
PID-000212	admin	6/19/2024	Master Pack	admin	6/19/2024	R1S1		WHOLESALE	Active	PALLET
PID-000211	admin	6/19/2024	Master Pack	admin	6/19/2024	R1S1		WHOLESALE	Active	PALLET
PID-000210	admin	6/19/2024	Master Pack	admin	6/19/2024	R1S1		WHOLESALE	Active	PALLET
PID-000209	admin	6/19/2024	Master Pack	admin	6/19/2024	R1S1		WHOLESALE	Active	PALLET
PID-000208	admin	6/18/2024	Master Pack	admin	6/19/2024	PSHIP	005922	WHOLESALE	Shipped	PALLET
PID-000207	admin	6/13/2024	Master Pack	admin	6/13/2024	PSHIP	005921	WHOLESALE	Active	PALLET
PID-000206	admin	6/13/2024	Inner Pack	admin	6/13/2024	SHIPPED	005921	WHOLESALE	Active	

Figure: New Container ID on the Container Screen

Upon clicking the [Container ID] you will be able to view the header details.

ContainerID:	PID-000224	Status:	Active	Box:	PALLET
ContainerType:	Master Pack	ShipmentNbr:		Weight:	0.1500
Warehouse:	WHOLESALE - Wholesale W	Creation Date:	6/20/2024 6:43 AM	Length:	0.0000
Location:	R1S1 - Row 1 Shelf 1	Test:		Width:	0.0000
		Version:		Height:	0.0000

Figure: Header details displayed in the Container screen

Changing the Batch Container from Master Pack to Inner Pack:

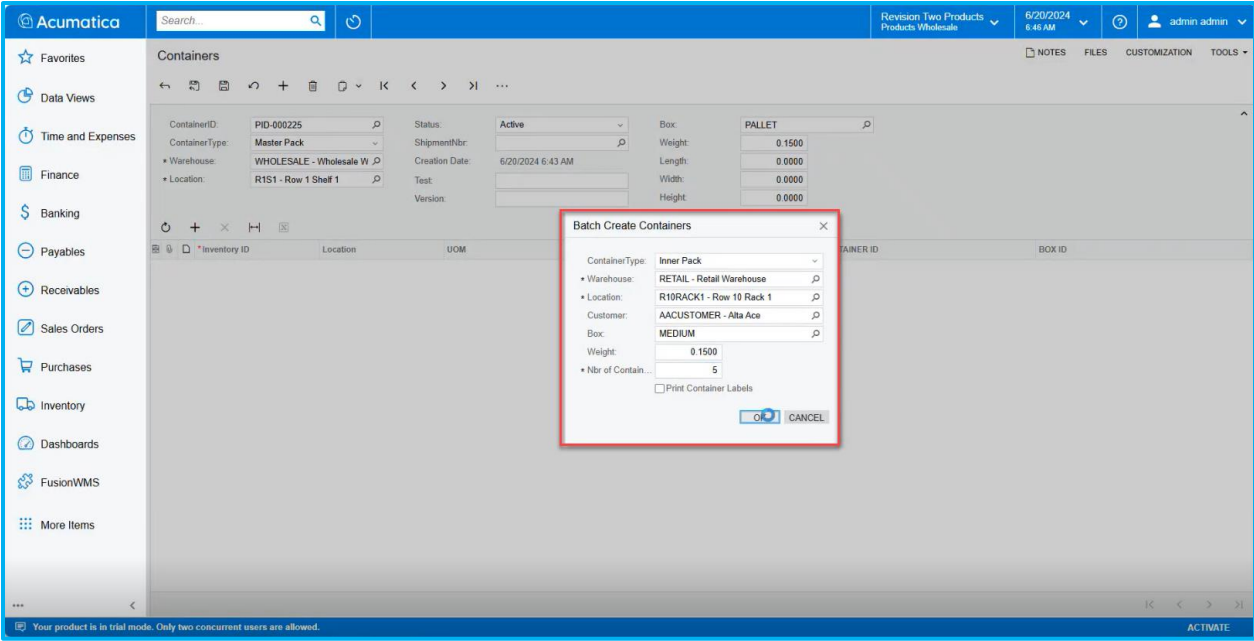


Figure: Container Type changed to Inner ack and number of Container is set to 5

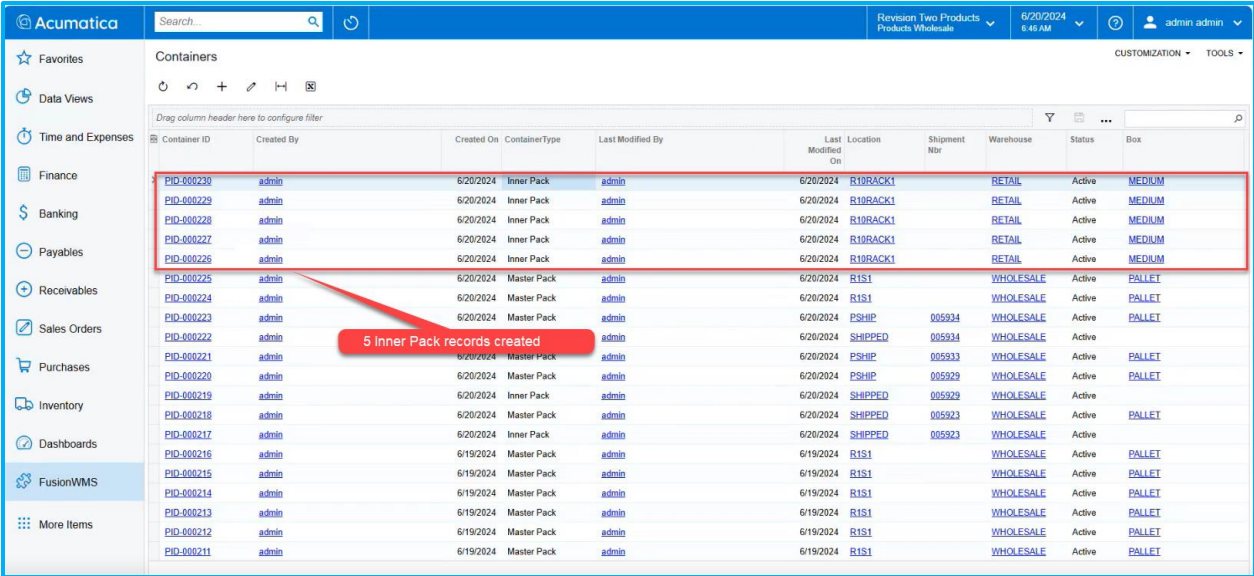


Figure: 5 Inner Pack records were created

Print Container Label [Check-box]:

When this option is checked you will be able to view the labels of the container.



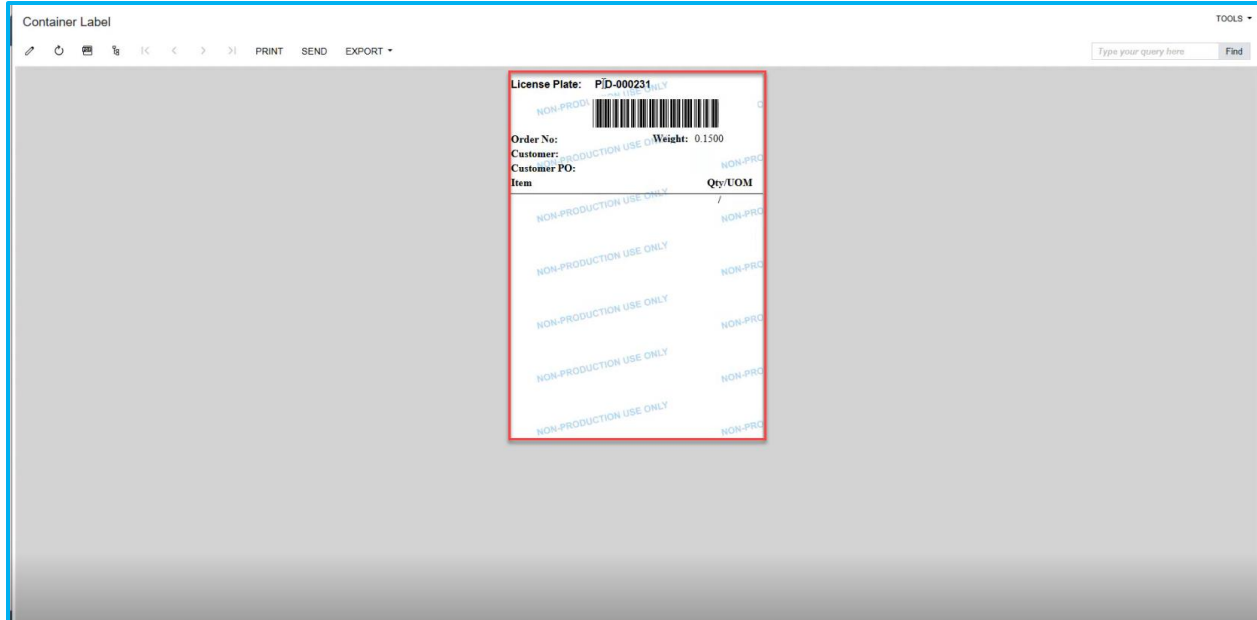


Figure: Container Label

## New field Primary Location added in Putaway and Handheld

We have added a new field called [Primary Location] to the Putaway and Transfer module on the handheld. This is linked to the Item Warehouse Details screen in Acumatica. The Primary Location you assign in the Acumatica warehouse details screen will be displayed in the Putaway and Transfer module on the handheld.

Navigate to Item Warehouse from the global search box as shown below.

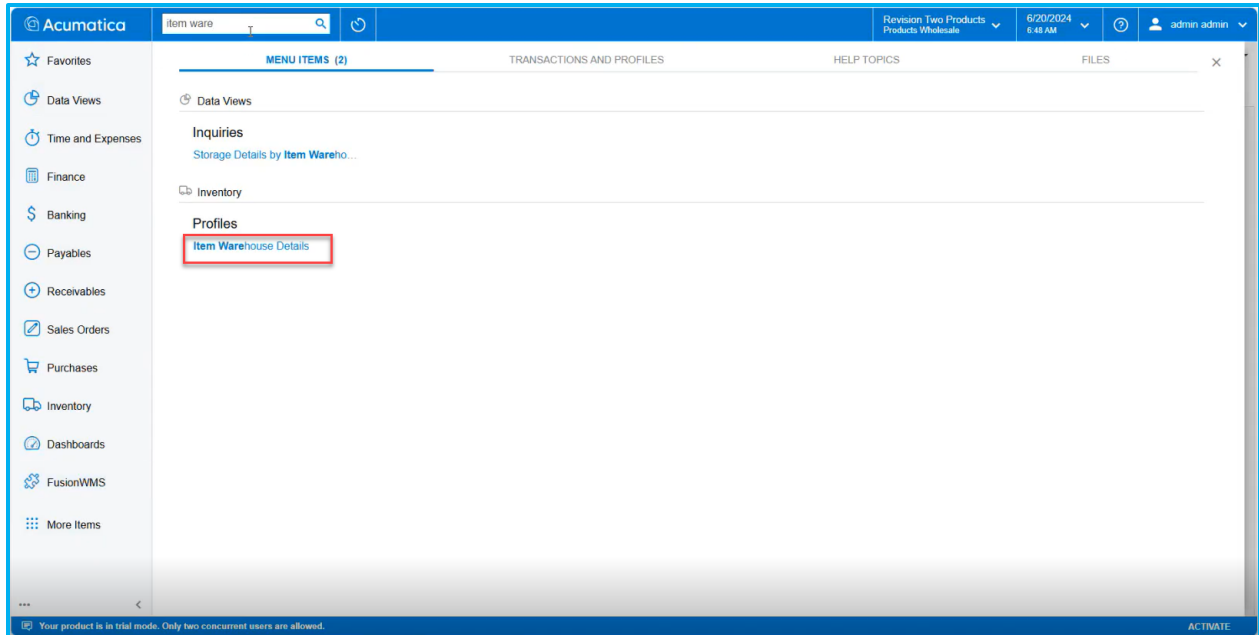


Figure: Click on Item Warehouse Details

Now select the [Inventory ID] and under the General tab → Storage Defaults you can view the [Primary Location].

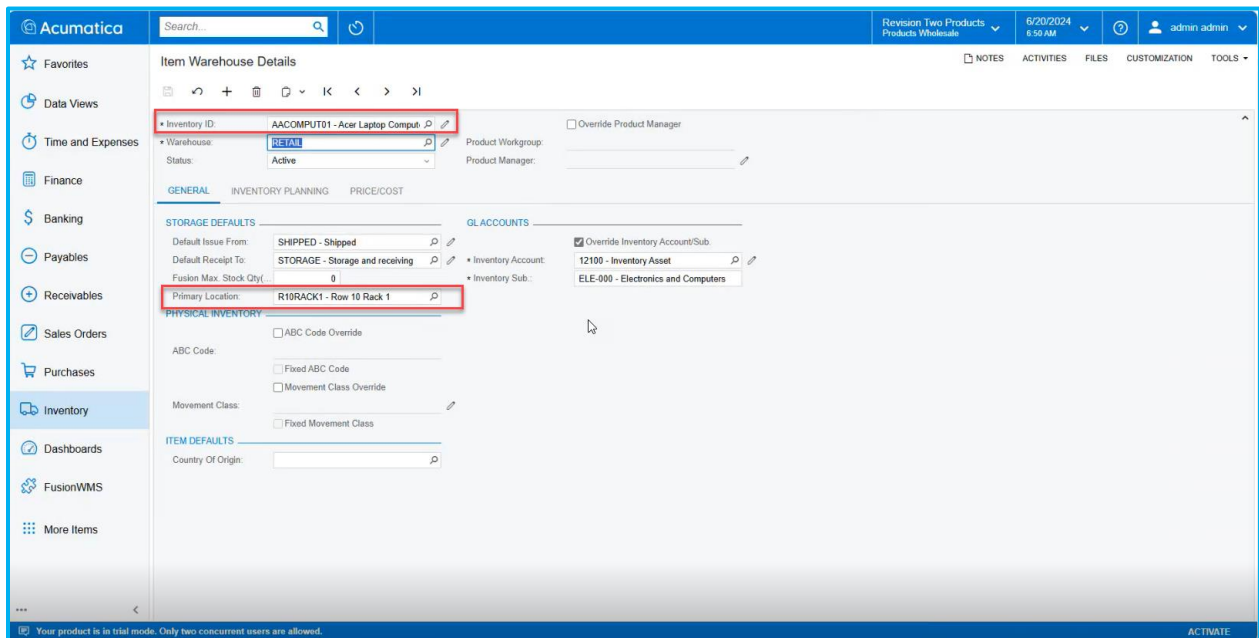


Figure: Primary Location against the Inventory ID

Now login to Handheld, and you can view the Putaway and the Transfer module.

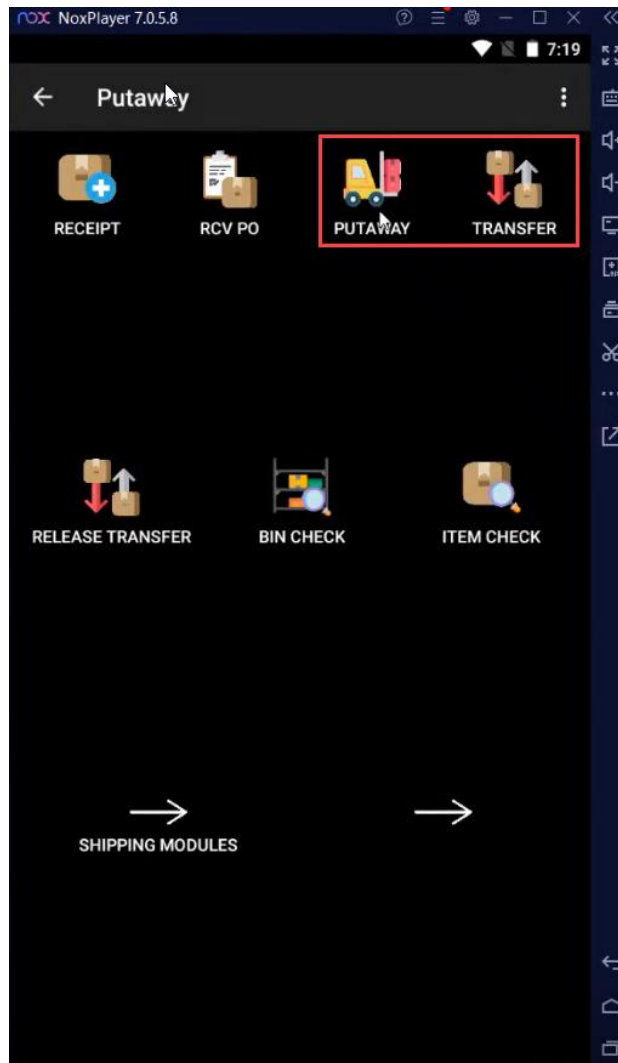


Figure: Putaway and Transfer module on Handheld

Click on the [Putaway] module on the handheld, which will prompt you to enter the item name.

The handheld will show the warehouse and the Primary Location as shown below.

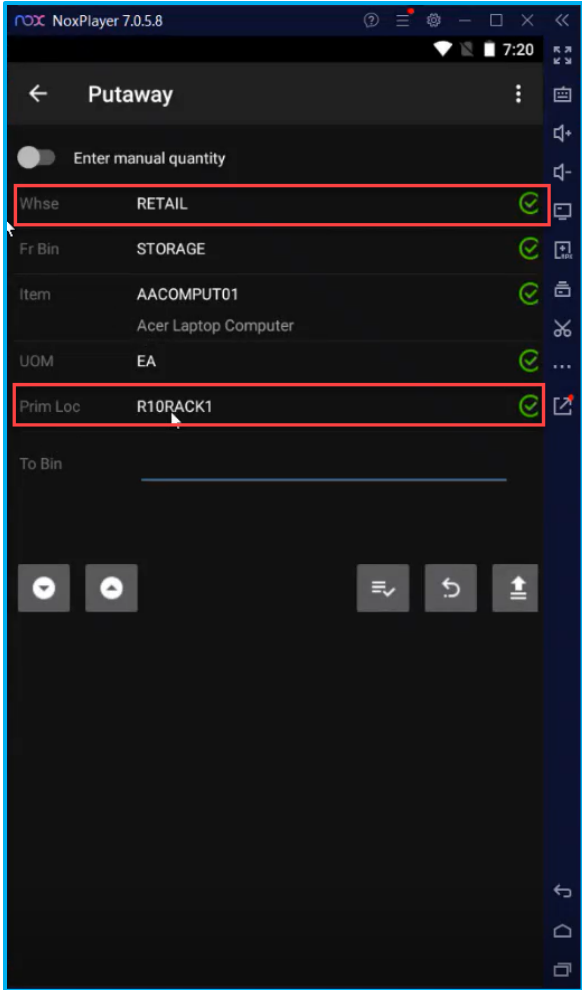


Figure: Primary Location on the handheld.

A similar feature has been implemented under the [Transfer] module on the handheld.

Illustration:

Change the Warehouse to Wholesale on the Item Warehouse Details screen in Acumatica.

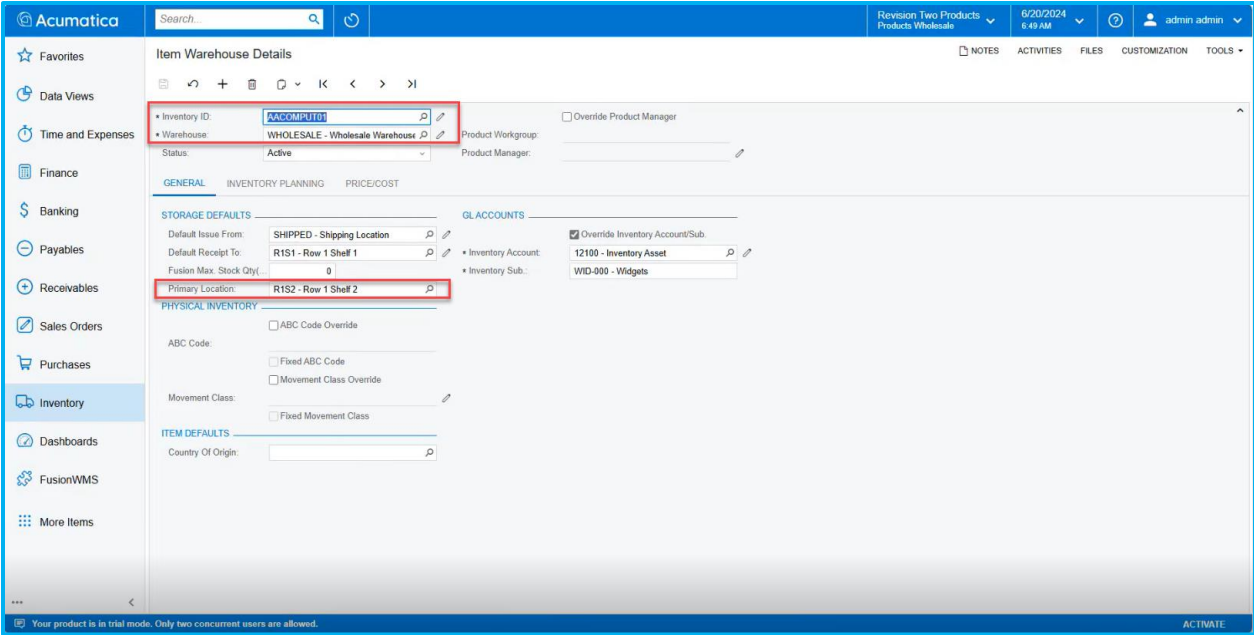


Figure: Primary Location on Item Warehouse Details screen

Navigate to handheld and click on the [Transfer] module. Enter the Bin name and Item name. Now you will be able to view the [Primary Location].

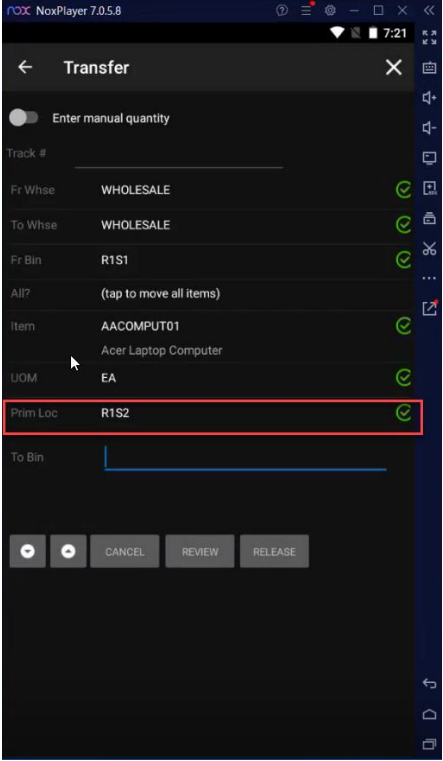


Figure: Primary Location in Transfer Module on the handheld.

## New field Creation Date on the Container Screen

We have introduced a [Creation Date] field on the Container Screen. In the previous version, we did not have the [Creation Date] field on the Container screen for Master Pack and Inner Packs.

Navigate to the [Container] screen and open a Container ID to view the details on the header. You can view the new field [Creation Date] with the time stamp.

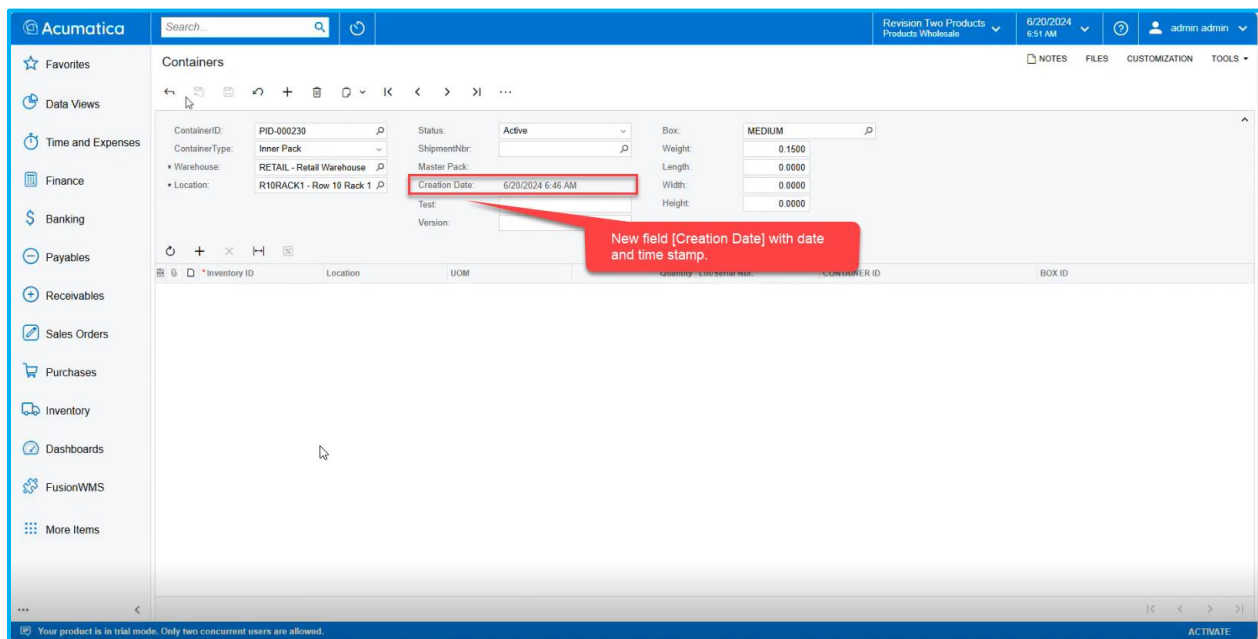


Figure: New field Creation Date with Time Stamp.

## Installation Changes

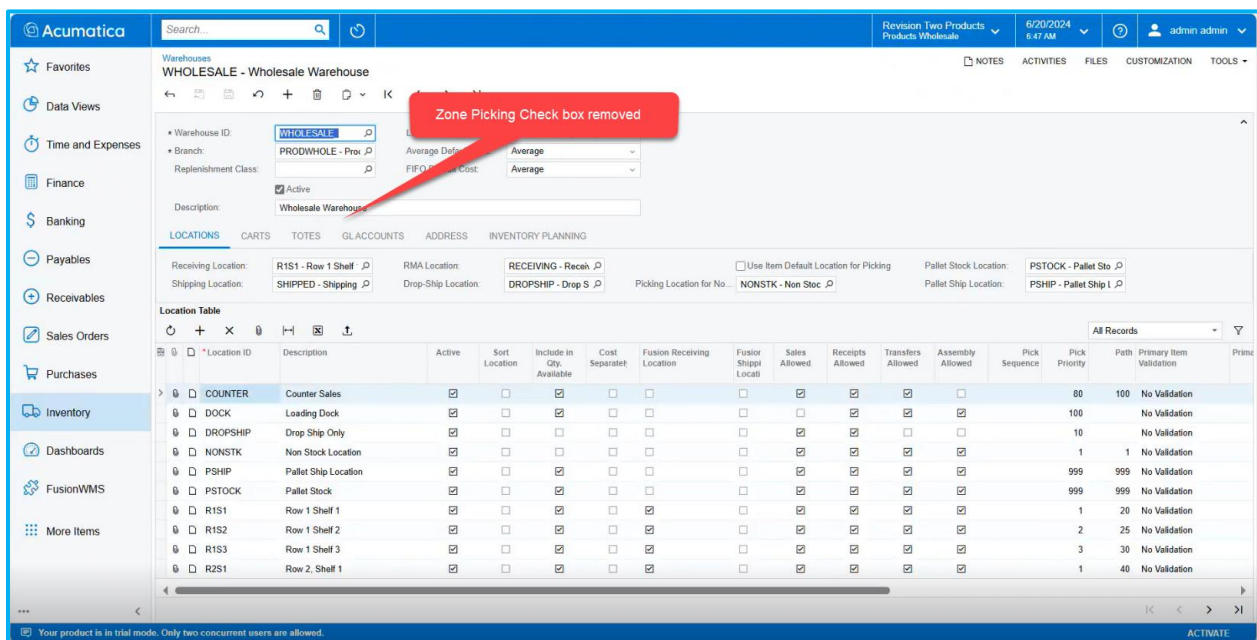
There are no installation changes included in this release.

# UI Changes

## Zone Picking checkbox on the Warehouse Screen removed

Previously, there was a checkbox labelled [Zone Picking] on the Warehouse screen. In this version, we have removed that checkbox.

To see this change, navigate to the Warehouse screen and select a warehouse record. Under [Description], you will notice that the [Zone Picking] checkbox has been removed.



Workspace	Screen	Entity
Warehouse	Warehouse screen	Zone Picking

## Fusion Customer Preferences moved

The Fusion Customer Preferences have been moved to Preferences under Fusion WMS. Previously it was under the [Transaction] which is now moved under [Preferences].

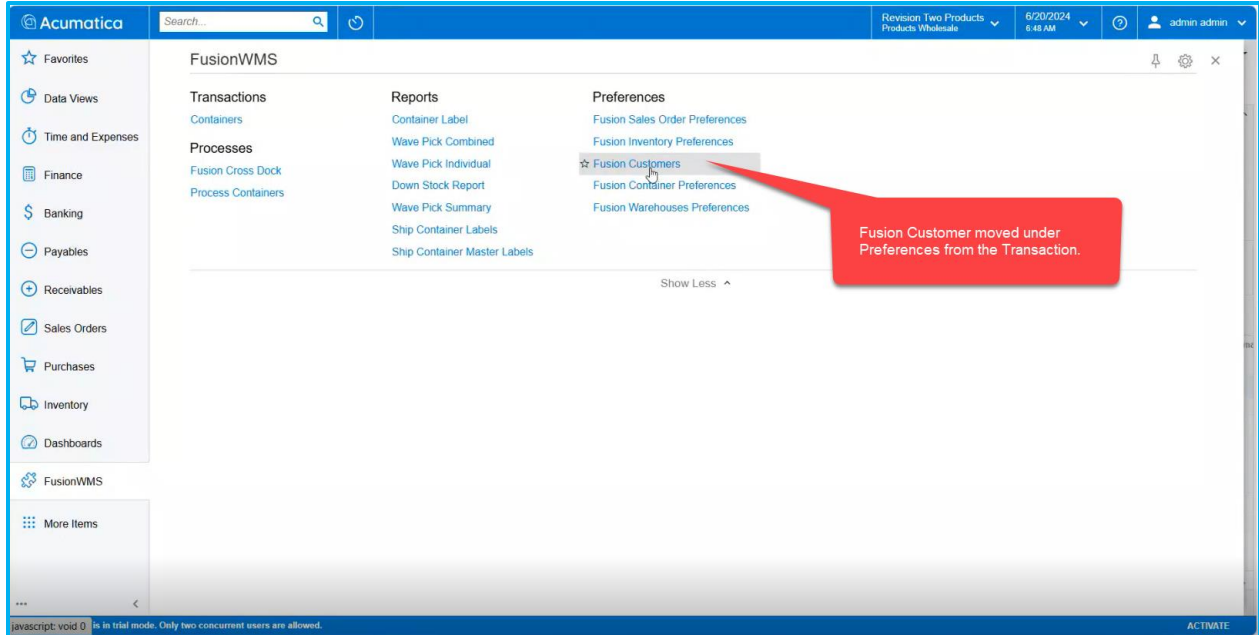


Figure: Fusion Customer moved under Preferences from Transactions

Workspace	Screen	Entity
Fusion WMS	Fusion WMS	Fusion Customer

## Known Bugs and Issues Fixes

- In the [Process Shipment] Screen we have a button [Optimize Shipment]. While selecting the [Optimize Shipment] selecting the records and passing it the application was throwing an error message.
- When creating a [Sales Order], generating a shipment, and completing the Pick Pack process, the application displayed both a container record and a transfer record. However, the transfer record showed a <New> reference number instead of the correct reference number.
- In Acumatica, on the [Transfer] screen, when we attempted to create and release a [Transfer], the application displayed an error message.



- On the [Shipment] screen, the Print Container Label option was previously missing. This option has now been added to the Shipment screen.
- When creating a Sales Order with a duplicate item, generating a shipment, and packing the shipment using the [Quickpack] screen, an error message is displayed on the Quickpack screen on the handheld when committing the shipment.