



# Release Notes

BrainTree February 2024

By Documentation Team

February 2024



© 2023 Kensium Solutions LLC

# Table of Contents

RELEASE NOTES..... 0

**RELEASE NOTES INFORMATION .....2**

ACKNOWLEDGEMENTS.....2

NOTICE .....2

VERSION HISTORY .....2

**NEW FEATURES AND ENHANCEMENTS.....3**

**INSTALLATION CHANGES.....3**

**UI CHANGES.....3**

**KNOWN BUGS AND ISSUES.....3**

OBJECTION REFERENCE ERROR MESSAGE ON CUSTOMER PAYMENT METHOD SCREEN .....3

PROCESSING CENTERS.....3

CUSTOMER PAYMENT METHODS.....5

**FIXES.....10**

# Release Notes Information

Software Name	Braintree
Version Number	0.1
Release Type (Initial/Minor/Intermediate/Major)	Intermediate
Compatible Acumatica Editions	Retail-Commerce <ul style="list-style-type: none"> <li>• 2021 R1</li> </ul>
Package Location	In SharePoint: Kensium Internal Products > Documents > Package Repository >

## Acknowledgements

Acumatica 2021 R1, R2, and Acumatica Commerce Edition are registered trademarks of Acumatica Inc. All Rights Reserved

Braintree is a service of PayPal. All Rights Reserved.

## Notice

The information contained in this document is subject to change without notice.

Kensium Solutions LLC shall not be liable for any errors or for incidental or illegal acts in connection with the use of these release notes.

Reproduction, adaptation, or translation of this document is prohibited without prior written permission of Kensium Solutions, except as allowed under copyright laws. All Rights Reserved.

## Version History

Version Number	Description	Compiled By	Reviewed & Revised By	Approved By	Date
0.1		Documentation Team	Asha A		

# New Features and Enhancements

No new features have been released in this release.

# Installation Changes

There are no installation changes included in this release.

# UI Changes

There are no UI changes included in this release.

Workspace	Screen	Entity

# Known Bugs and Issues

## Objection Reference Error Message on Customer Payment Method Screen

Previously, there was an error which appeared on the Customer Payment Method Screen, which has now been fixed.

Follow the steps below to add the Card Details on the Customer Screen.

### Processing Centers

- You must Navigate to the left of Acumatica select **[Banking]** and then click on **[Processing Centers]** under **[Credit Card Processing]**.

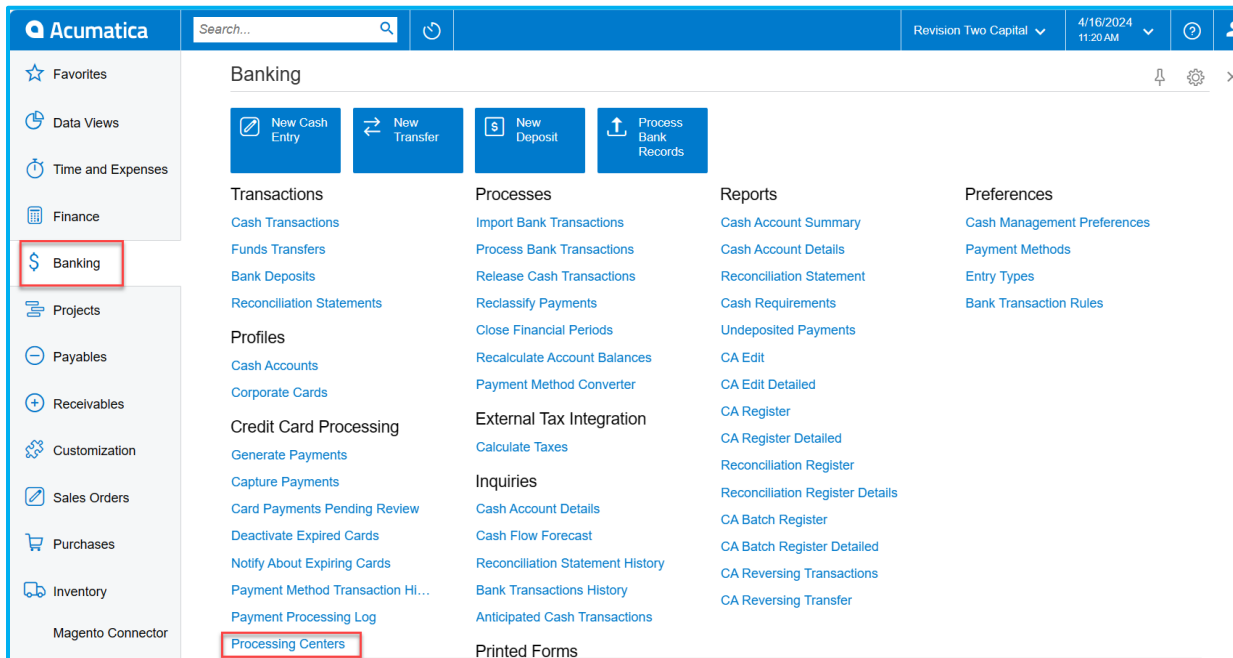


Figure: Processing Centers

- Select **[BRAINTREE]**.

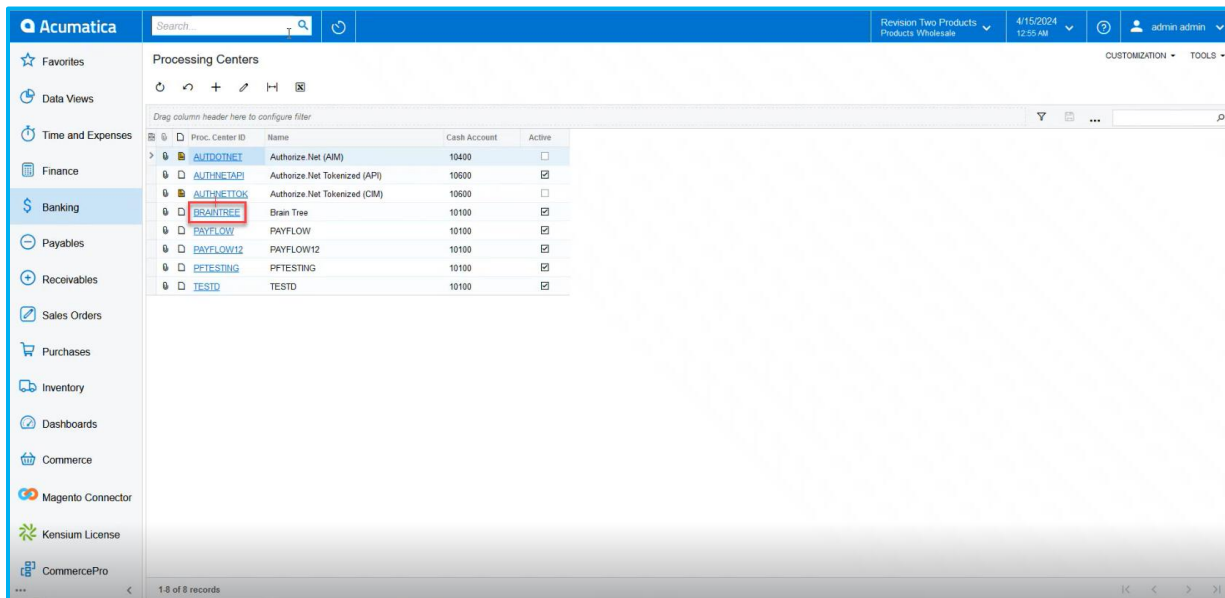


Figure: Processing Centers

- Next select **[PREFERENCES]** under **[Processing Centers]** and enable the check box under **[PROFILE CREATION]**.

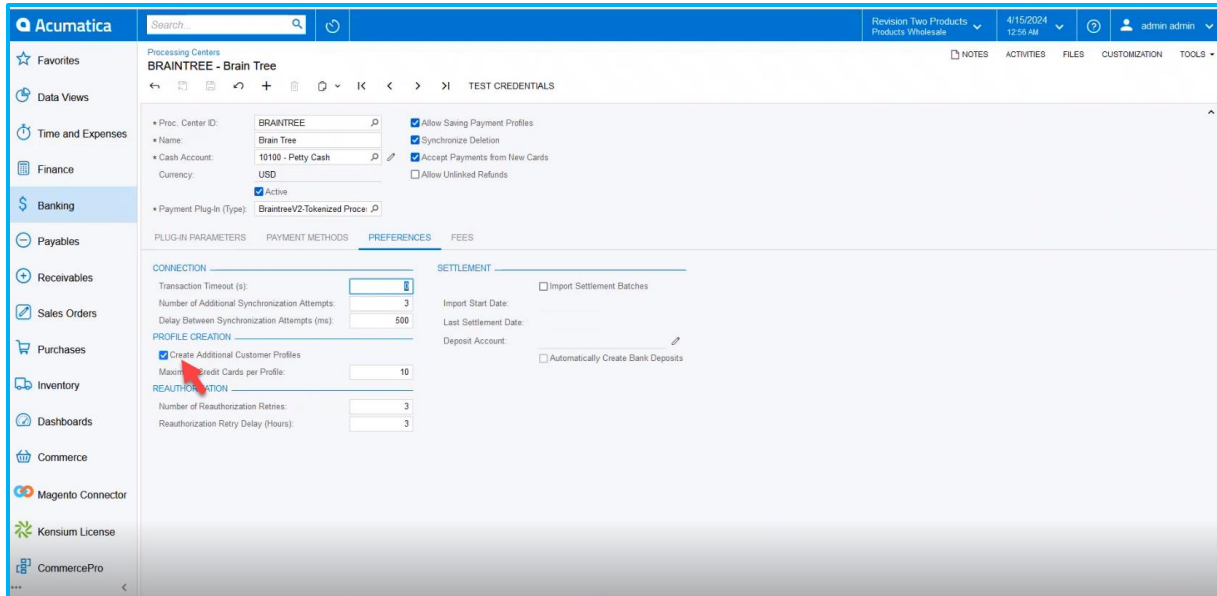


Figure: Toggle the Check Box

- Enabling the check box will result in a successful authentication message. Once the notice is displayed, go to Customer Payment Methods.

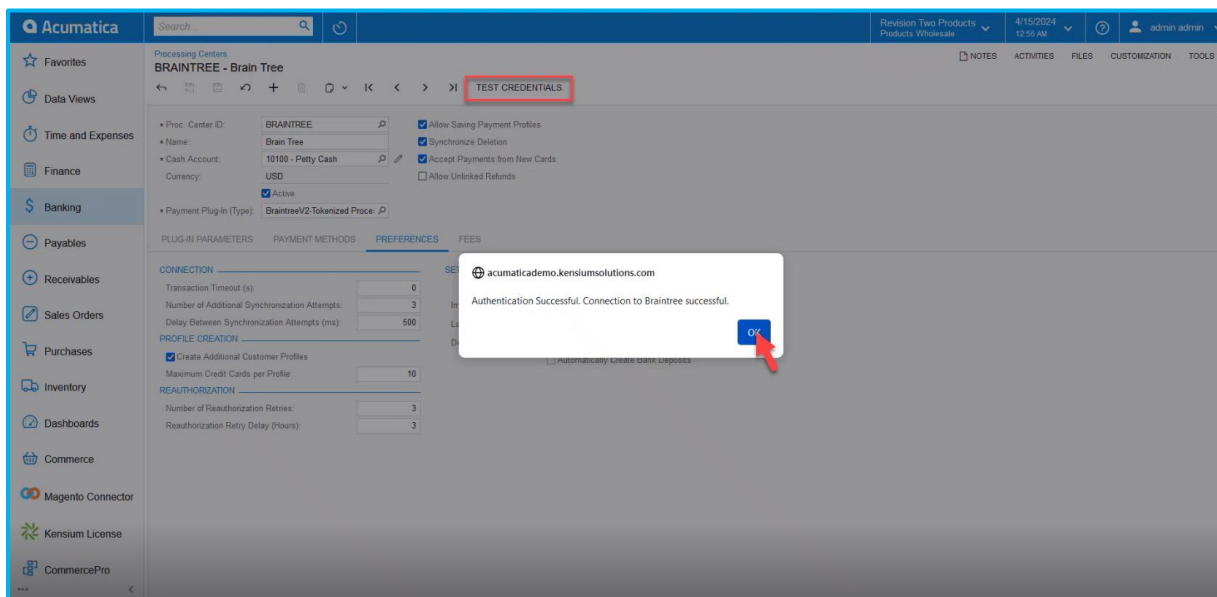


Figure: Authentication Message

## Customer Payment Methods

- Navigate to the Left side of Acumatica and Select **[Receivables]** and then click on **[Customer Payment methods]** under **[Profiles]**.

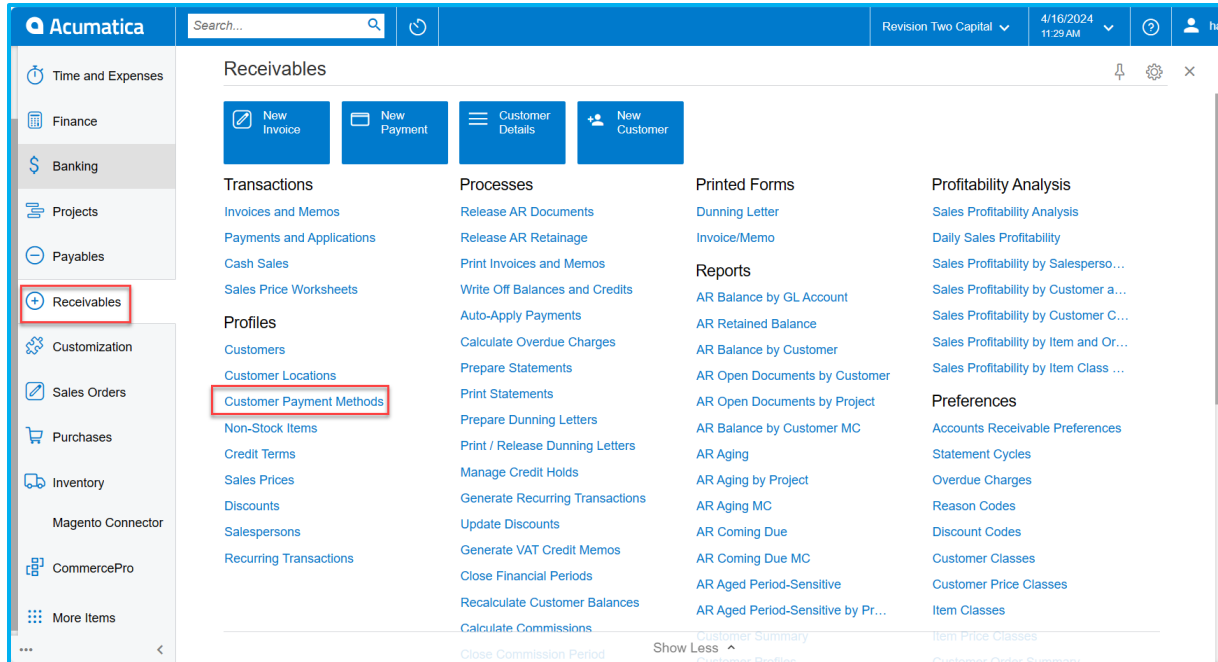


Figure: Customer Payment Methods

- Add the customer or select the **[Customer]**.

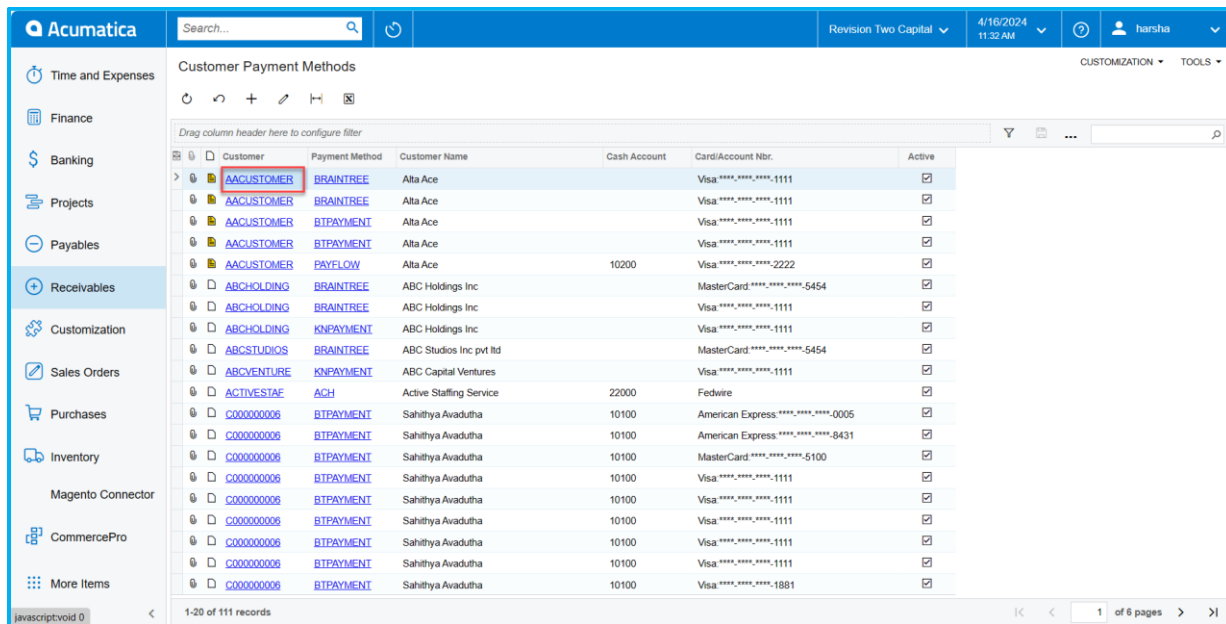


Figure: Customer Payment Methods

- Select **[ADD PAYMENT METHOD]** under Customers Screen.

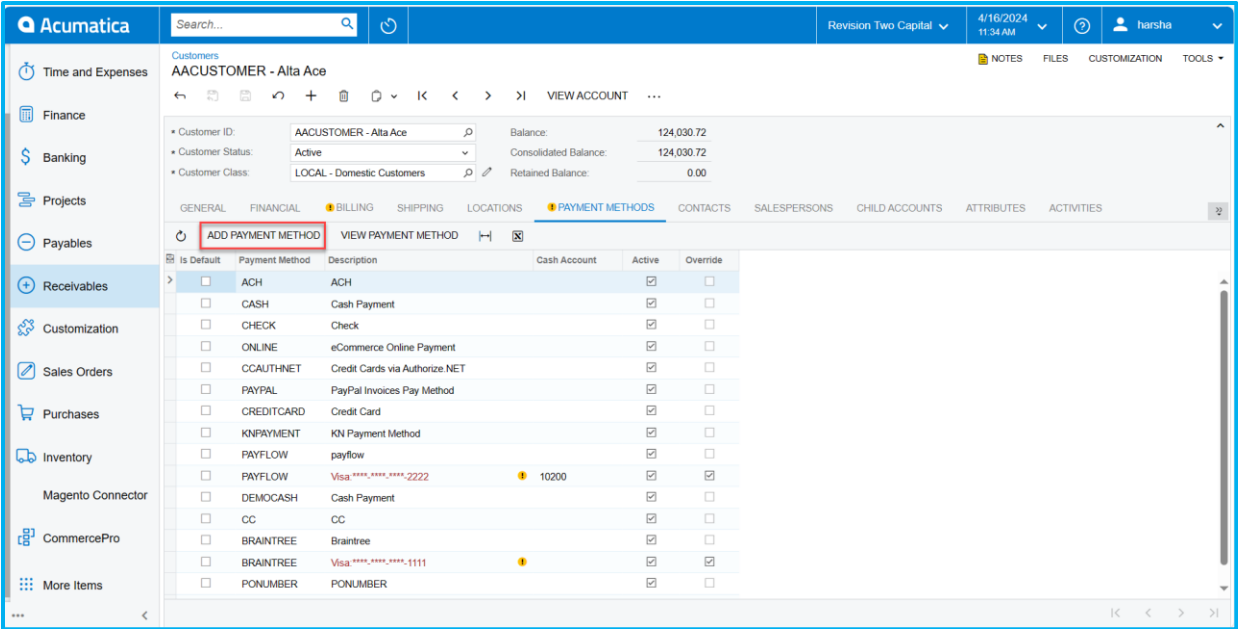


Figure: Click on ADD PAYMENT METHOD

- You will redirect to the following screen then select **[PAYMENT METHODS]**. And select **[Payment Method]** as **[BRAINTREE]**.

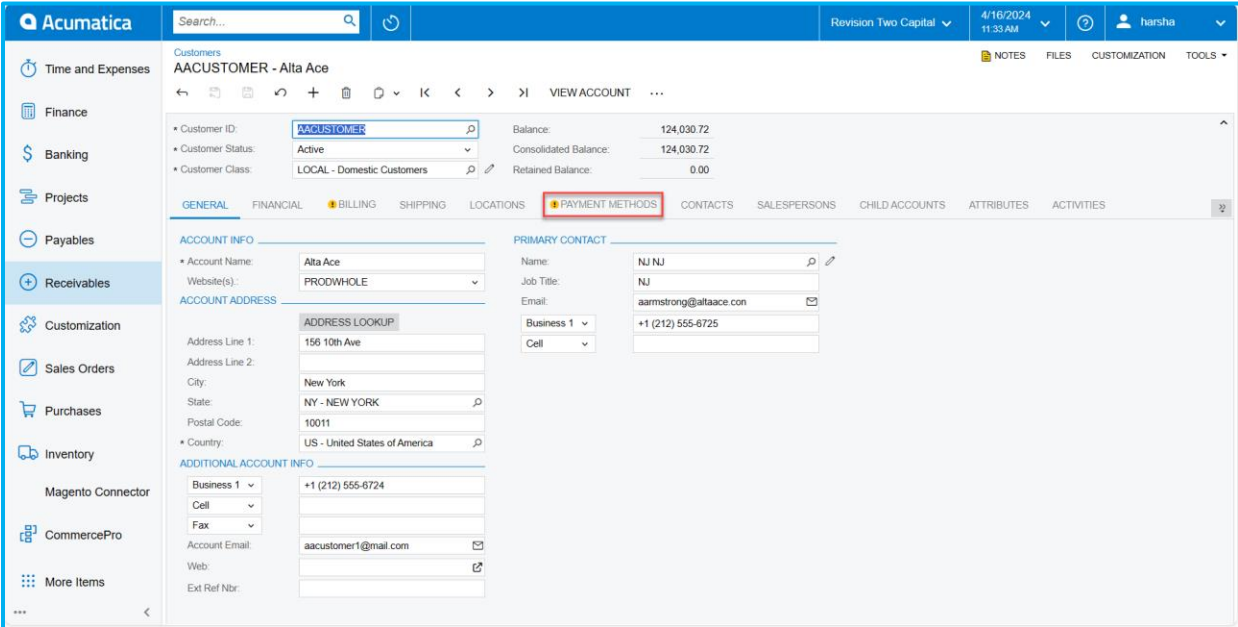


Figure: Customers Screen



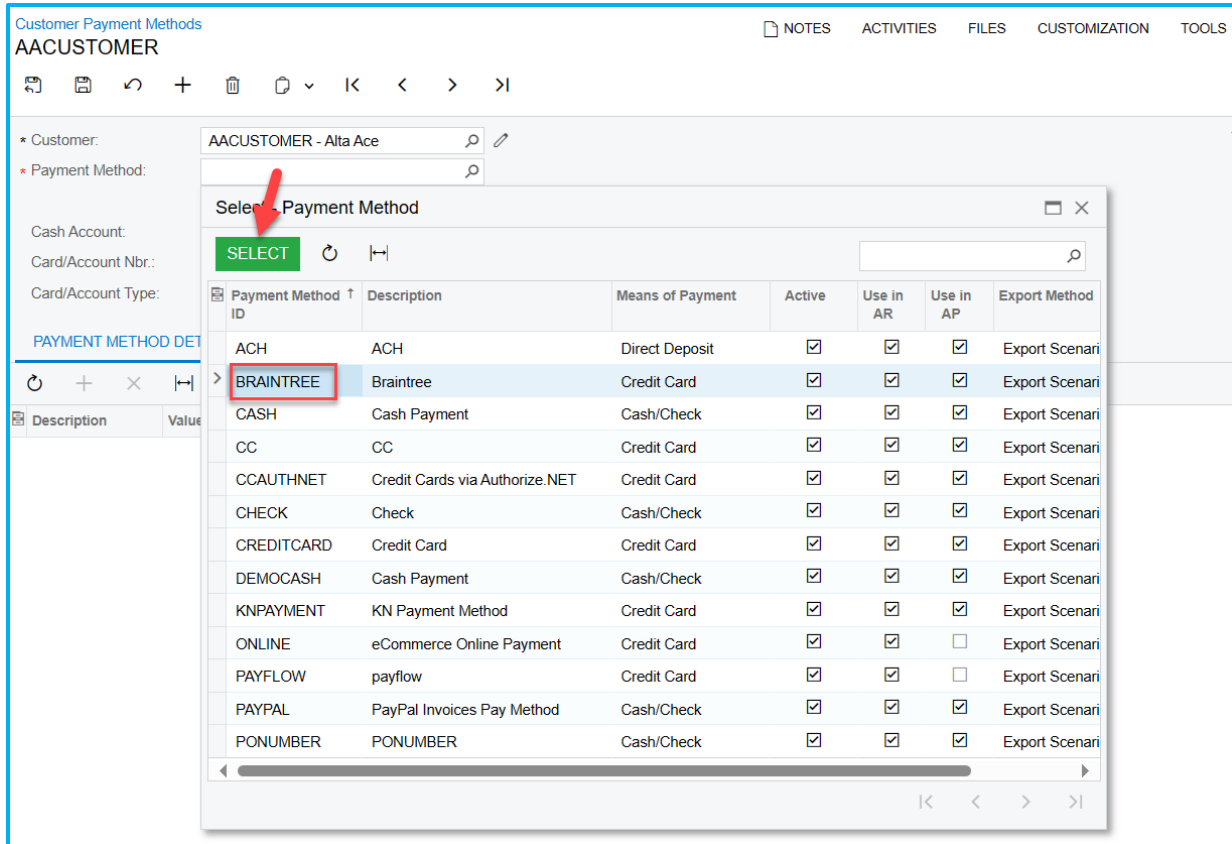


Figure: Customer Payment Method

- On selecting Payment Method, you will get a **[CREATE NEW]** under **[Payment Method Details]**.

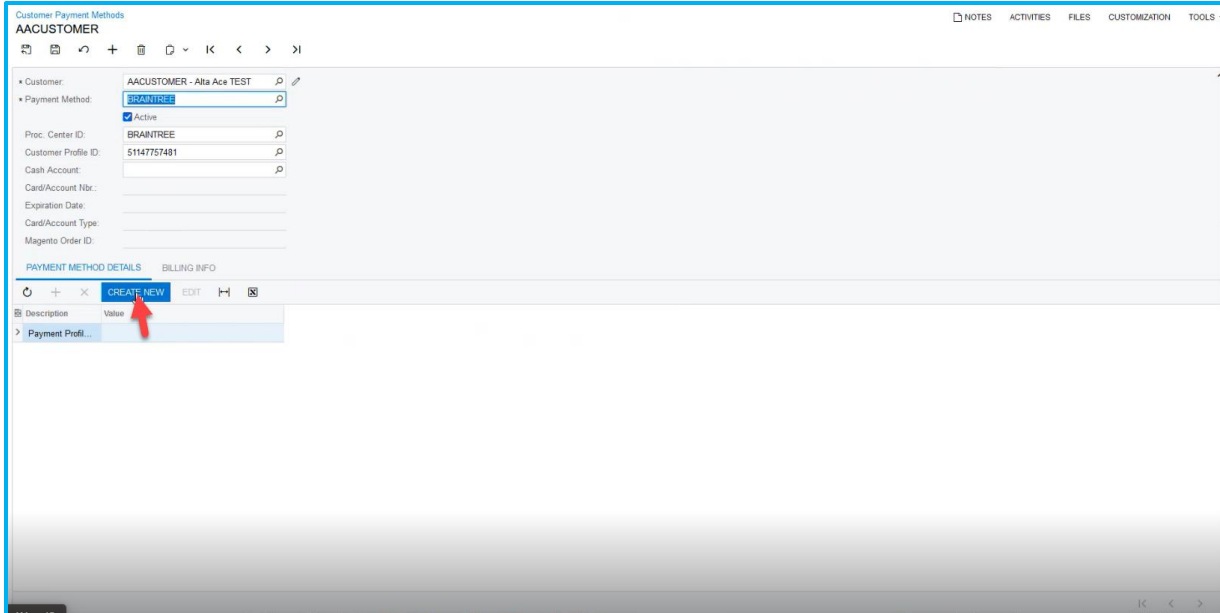


Figure: Customer Payment Method

- Next add the card details under **[Add Payment]** and click on **[Submit]**. And the card details will add to the **[Customer Payment Methods]** Screen.

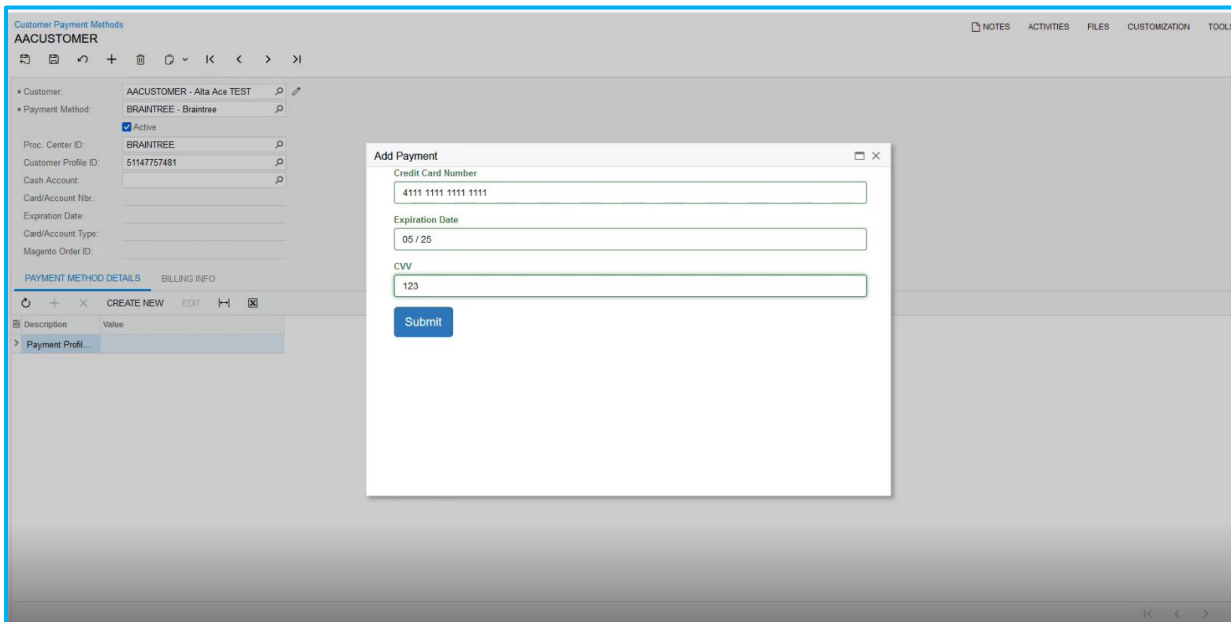


Figure: Customer Payment Method

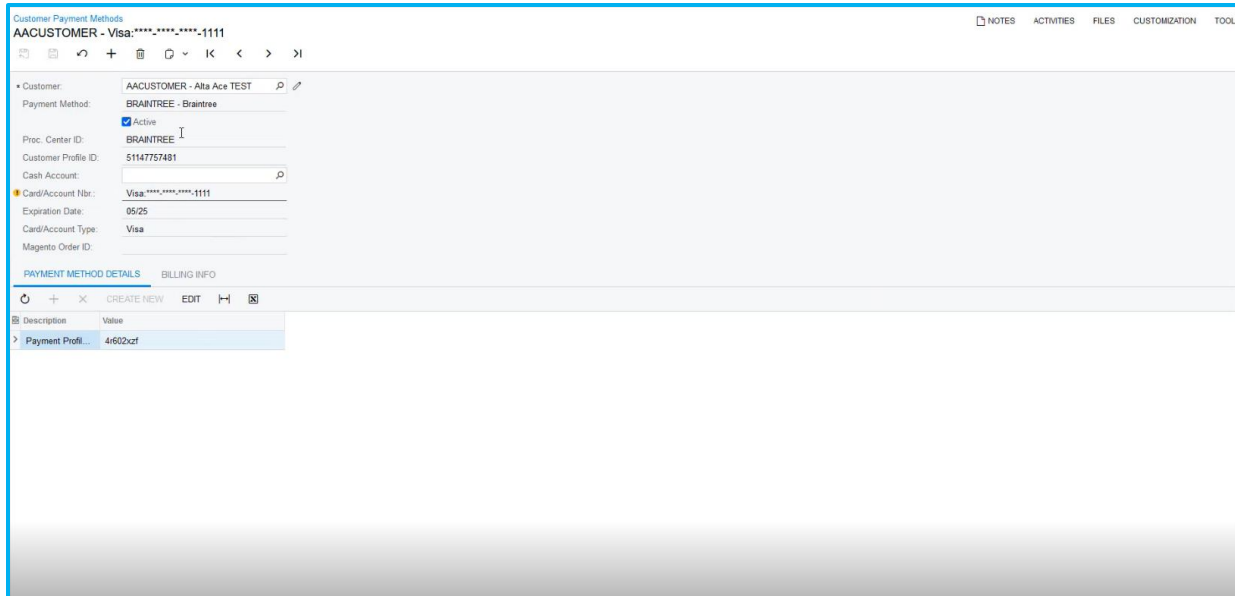


Figure: Customer Payment Method

## Fixes

The bugs and issues mentioned above have been resolved in this release.