

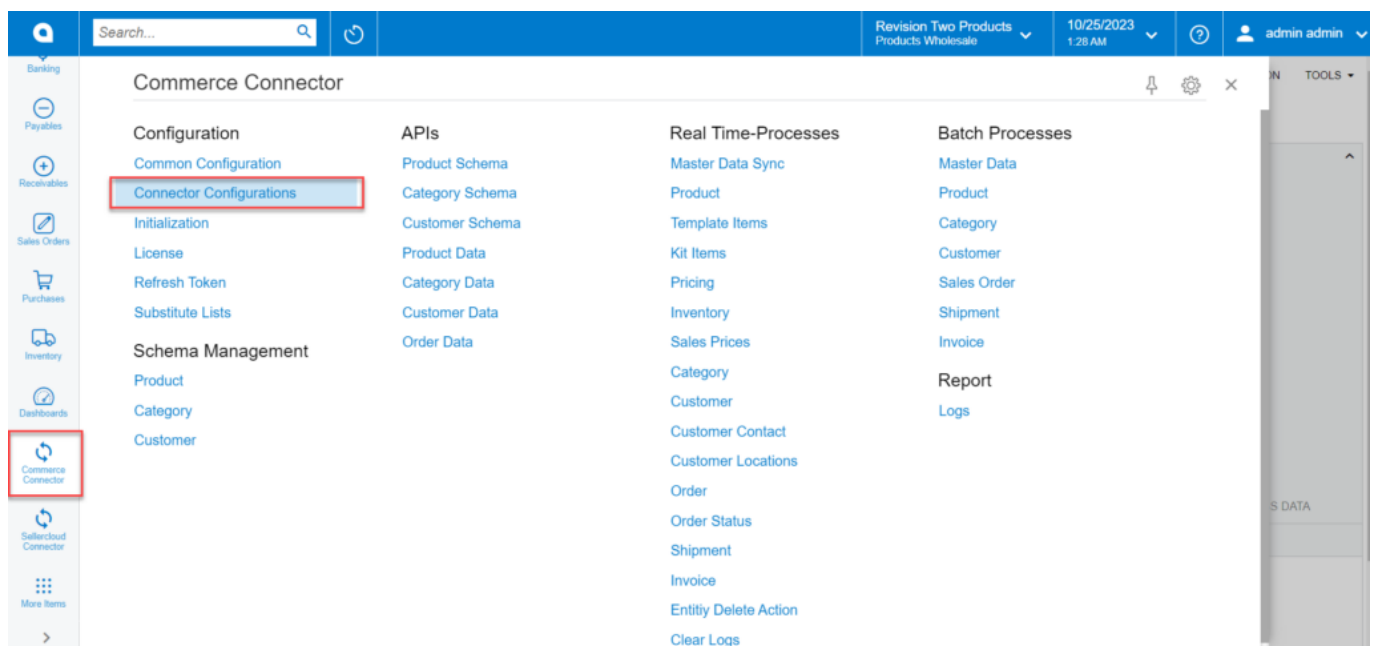
# Connector Configuration



Connector configurations are referred to as, the settings and parameters used to integrate and sync data between Acumatica and other platforms.

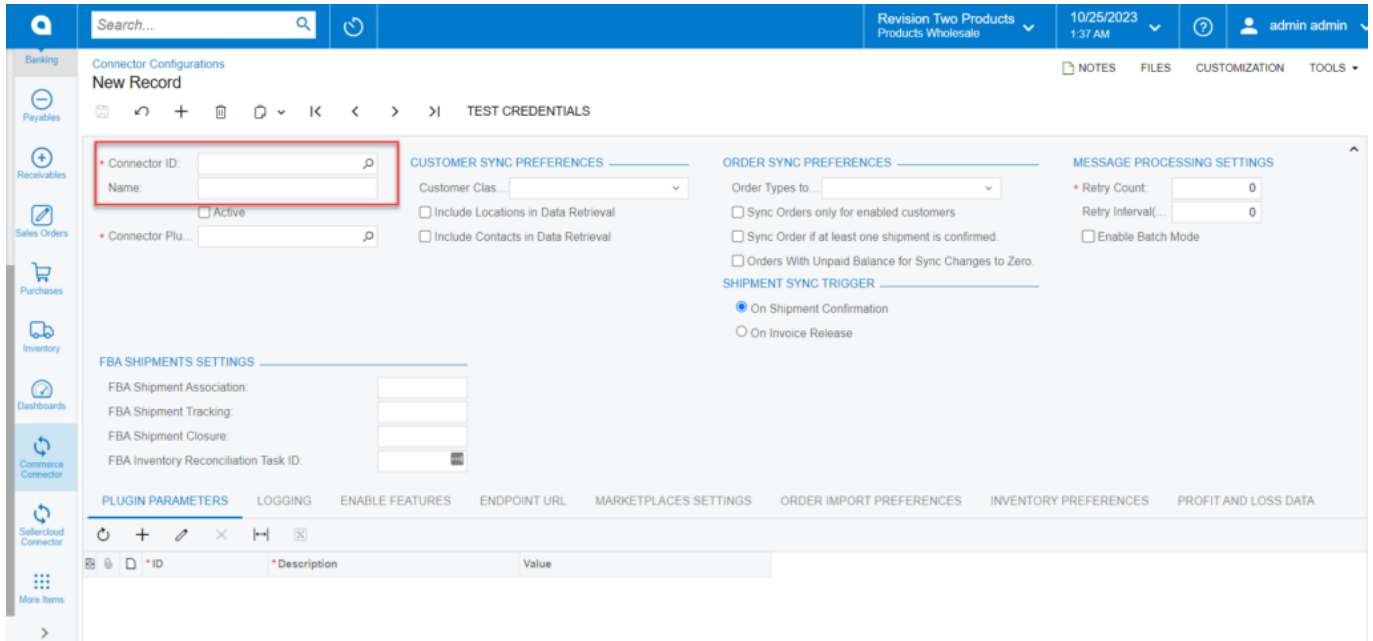
To configure the SellerCloud Connector first you need to set up the parameters of the connector.

- To access the **[Connector Configuration]**, navigate to the left panel in **[Acumatica]** and choose the option **[Connector Configurations]**.



## Commerce Connector

- You will be redirected to the Connector Configuration Screen.

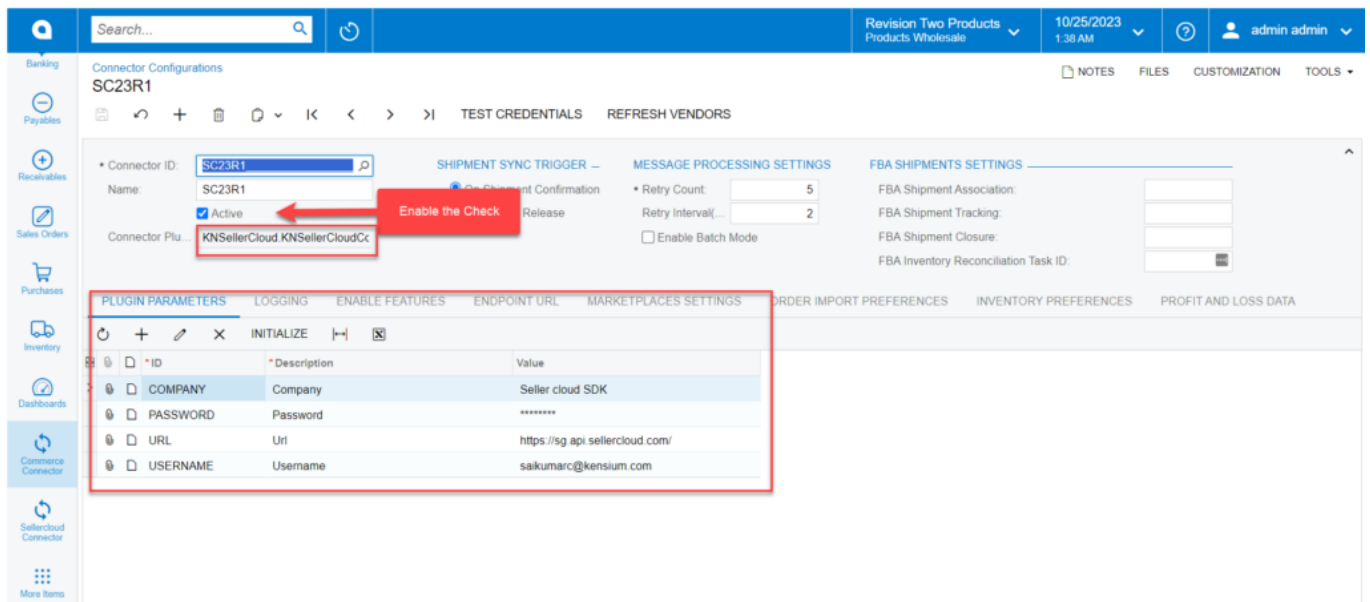


The screenshot shows the 'Connector Configurations' page with a 'New Record' form. The form includes fields for 'Connector ID' and 'Name', which are highlighted with a red box. Below these fields is a checkbox for 'Active'. To the right, there are sections for 'CUSTOMER SYNC PREFERENCES', 'ORDER SYNC PREFERENCES', 'MESSAGE PROCESSING SETTINGS', and 'SHIPMENT SYNC TRIGGER'. At the bottom, there is a 'PLUGIN PARAMETERS' section with a table of parameters.

ID	Description	Value
COMPANY	Company	Seller cloud SDK
PASSWORD	Password	*****
URL	Url	https://sg.api.sellercloud.com/
USERNAME	Username	saikumarc@kensium.com

### Connector Configuration Screen

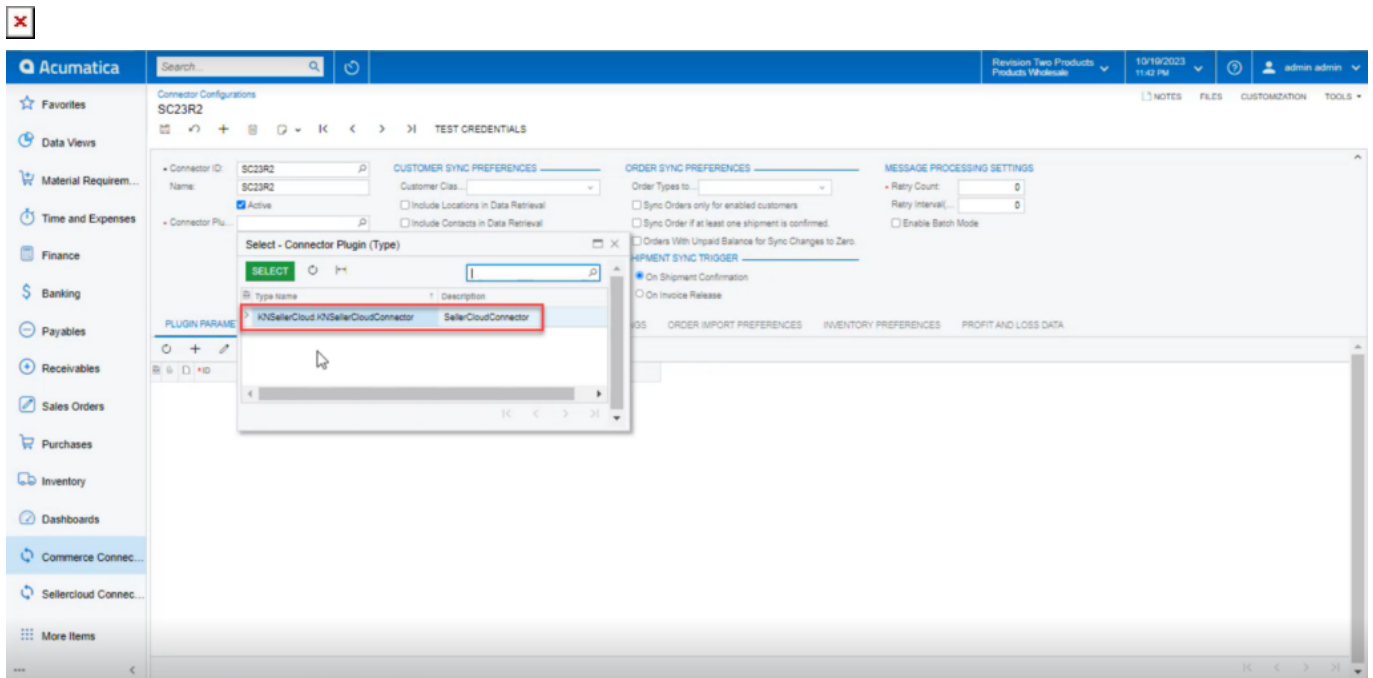
- You can create [**Connector ID**] of the store or search for the existing store [**Customer ID**].
- Enter the name of the store.



The screenshot shows the 'Connector Configurations' page with a record for 'SC23R1'. The 'Connector ID' field is set to 'SC23R1' and the 'Name' field is set to 'SC23R1'. The 'Active' checkbox is checked, and a red arrow points to it with the text 'Enable the Check'. Below the form, the 'PLUGIN PARAMETERS' section is expanded, showing a table of parameters.

ID	Description	Value
COMPANY	Company	Seller cloud SDK
PASSWORD	Password	*****
URL	Url	https://sg.api.sellercloud.com/
USERNAME	Username	saikumarc@kensium.com

## Connector Configuration with Plugin Parameters



### Connector Plugin

- You can search for the **[Connection plugin]** and select a package from the results; after the package is published, the Connector ID will automatically appear in the connector plugin tab.
- You must choose the SellerCloud (**KNSellerCloud Connector.KNSellerCloud Connector**) Connector plugin from the menu.