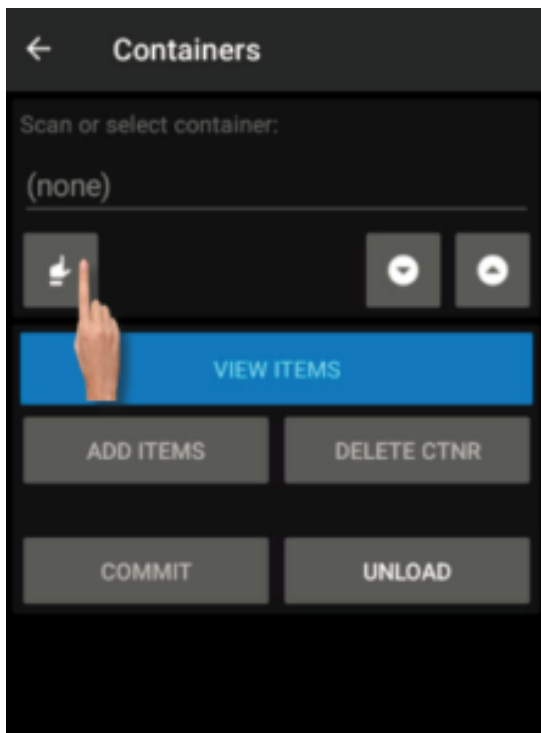




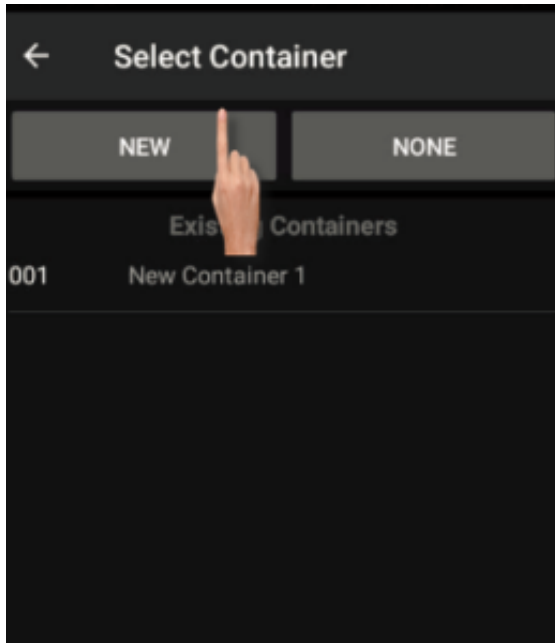
Select Container



The user can create a container by pressing the select container button, after pressing this button, a new screen “select Container ” will be shown, which the user can press on the NEW button to create a new container or just press the NONE button which it will not create any container, if containers are already created the user also can be able to see and select an existing container and choose it instead to add a new container, if the user press on the NEW button, the current container field will be filled by a consecutive container number 001-New container 1, 002-New container 2, etc...



Select Button

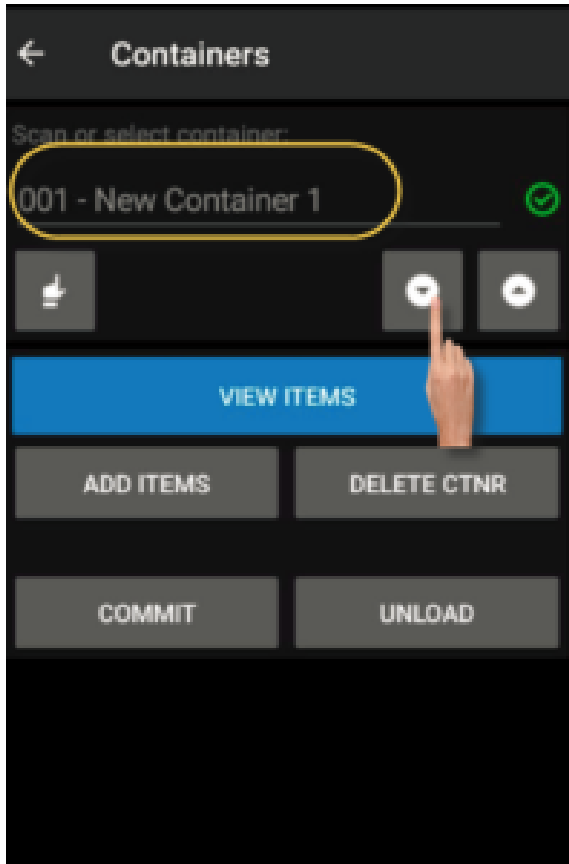


New Button

After a container is created, the user can navigate through all the containers by pressing the up/down arrow buttons under the current container field, at this point, the user can add, delete, view items, commit or unload the selected container.



fusion
WMS



Scroll Navigation