

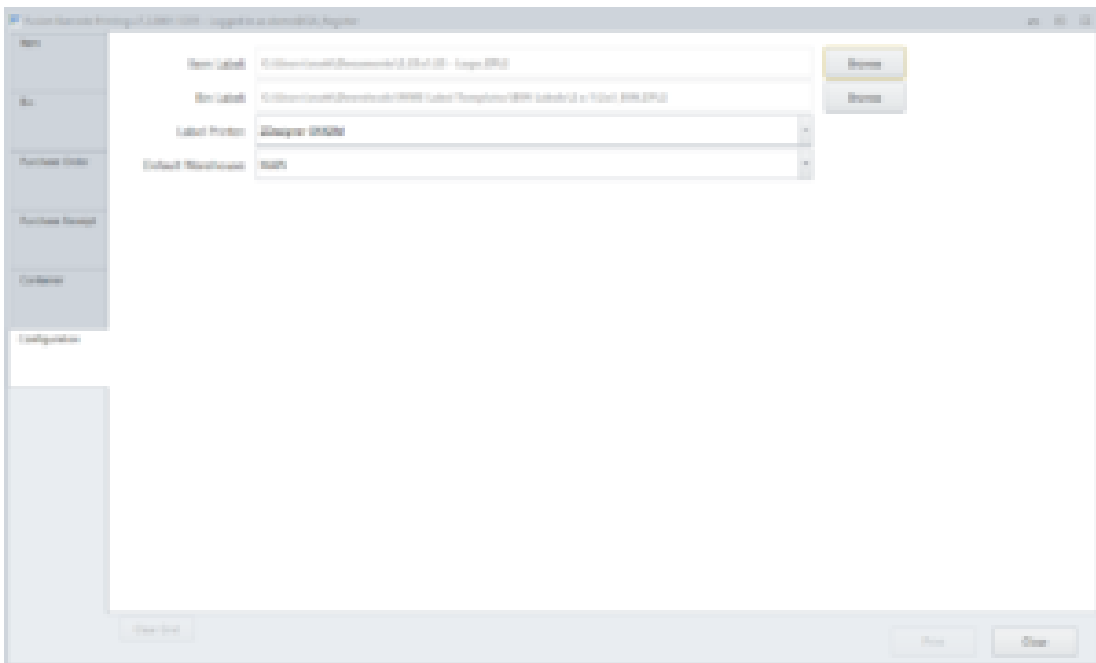
Label Configuration



Once in the application, you will first need to configure labels to use. The main screen includes 6 tabs:

- Item - This allows you to build a list of items to print.
- Bin - This allows you to build a listing of bins and print them on the fly.
- Purchase Order - This allows you to print the Qty of items based on a PO in the ERP or pre-print labels before the product shows up.
- Purchase Order Receipts - This allows you to select a specific receipt and print the qtys received.
- Container - See container section for more information.
- Configuration - This allows you to set the default label types for item and bin labels.

You will select the configuration tab.



Label Configuration

Here you will need to configure 4 items:

- Item Label - Select browse to locate the .zpl label configured to print items.
- Bin Label - Select browse to locate the .zpl label configured to print bins.
- Label Printer - Select the main printer from the drop down.



fusion
WMS

- Default Warehouse - Select the default from the drop down.

Once complete you can now print labels.